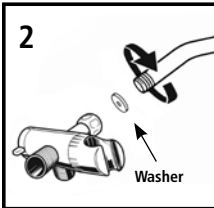


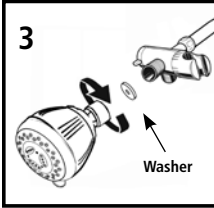
**1. Remove Shower Head**

Turn the existing shower head counter-clockwise with adjustable wrench or pliers. Use care not to unscrew the shower arm; hold the shower arm secure.  
**Note: If your shower arm has a ball on the end of it, it will not work with this shower unit and will need to be replaced with a standard shower arm.**



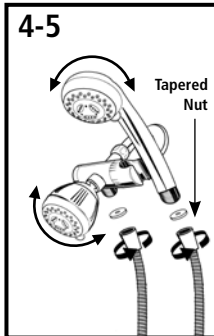
**2. Install Diverter/Shower Mount**

Check mount to ensure Washer is present. **Hand tighten** the female nut of the Diverter/Shower Mount clockwise onto the exposed shower arm threads until tight. Use the Teflon® tape at this connection only. If necessary, use a wrench to tighten the diverter nut. Be careful not to overtighten.



**3. Install Shower Head**

Check Shower Head to ensure washer is present. Seat the Washer firmly into the female end of the Shower Head. **Hand tighten** the female end of the Shower Head clockwise onto the exposed Diverter/Shower Mount threads until tight. Do not use a wrench or pliers.



**4. Connect Hose to Diverter/Shower Mount**

Seat the Washer firmly into the Hose hex nut. Carefully align the threads of the Hose nut directly to the Diverter/Shower Mount. **Hand tighten** the hex nut clockwise to the bottom outlet on the Diverter/Shower Mount. Do not use a wrench or pliers.

**5. Connect Hose to Hand Shower**

Seat the Washer firmly into the Hose tapered nut. Carefully align the threads of the Hose nut directly to the Hand Shower. **Hand tighten** - do not use a wrench or pliers. Then place the Hand Shower into the Shower Mount.

**Lifetime Warranty** Delta Faucet warrants to the owner of this product that the product is free from defects in material or workmanship for the period stated above from the date of purchase.

If this product malfunctions or becomes damaged, stop use and return it to the dealer where purchased or the manufacturer (we recommend to ship via United Parcel Service):

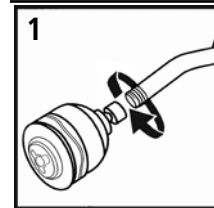
If in the USA:  
Alsons Corporation  
3010 West Mechanic Street  
Hillsdale, MI 49242

If in Canada:  
Masco Canada Limited  
46 Bosworth Court  
Brantford, ON N3T 5N9

We will repair or replace, at our discretion, at no charge.

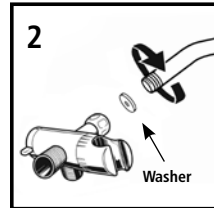
This warranty gives you specific legal rights. You may also have other rights that vary where you reside.

For assistance with problems with installation: In the USA, call toll free 1-800-421-0001, 8:00 a.m. to 6:00 p.m., Eastern Standard Time, Monday - Friday.



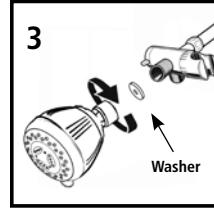
**1. Remove Shower Head**

Turn the existing shower head counter-clockwise with adjustable wrench or pliers. Use care not to unscrew the shower arm; hold the shower arm secure.  
**Note: If your shower arm has a ball on the end of it, it will not work with this shower unit and will need to be replaced with a standard shower arm.**



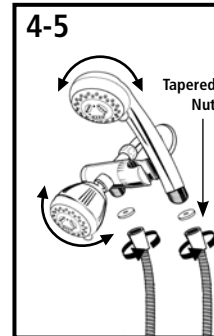
**2. Install Diverter/Shower Mount**

Check mount to ensure Washer is present. **Hand tighten** the female nut of the Diverter/Shower Mount clockwise onto the exposed shower arm threads until tight. Use the Teflon® tape at this connection only. If necessary, use a wrench to tighten the diverter nut. Be careful not to overtighten.



**3. Install Shower Head**

Check Shower Head to ensure washer is present. Seat the Washer firmly into the female end of the Shower Head. **Hand tighten** the female end of the Shower Head clockwise onto the exposed Diverter/Shower Mount threads until tight. Do not use a wrench or pliers.



**4. Connect Hose to Diverter/Shower Mount**

Seat the Washer firmly into the Hose hex nut. Carefully align the threads of the Hose nut directly to the Diverter/Shower Mount. **Hand tighten** the hex nut clockwise to the bottom outlet on the Diverter/Shower Mount. Do not use a wrench or pliers.

**5. Connect Hose to Hand Shower**

Seat the Washer firmly into the Hose tapered nut. Carefully align the threads of the Hose nut directly to the Hand Shower. **Hand tighten** - do not use a wrench or pliers. Then place the Hand Shower into the Shower Mount.

**Lifetime Warranty** Delta Faucet warrants to the owner of this product that the product is free from defects in material or workmanship for the period stated above from the date of purchase.

If this product malfunctions or becomes damaged, stop use and return it to the dealer where purchased or the manufacturer (we recommend to ship via United Parcel Service):

If in the USA:  
Alsons Corporation  
3010 West Mechanic Street  
Hillsdale, MI 49242

If in Canada:  
Masco Canada Limited  
46 Bosworth Court  
Brantford, ON N3T 5N9

We will repair or replace, at our discretion, at no charge.

This warranty gives you specific legal rights. You may also have other rights that vary where you reside.

For assistance with problems with installation: In the USA, call toll free 1-800-421-0001, 8:00 a.m. to 6:00 p.m., Eastern Standard Time, Monday - Friday.